

Force Gauge Test Stand



デジテック株式会社

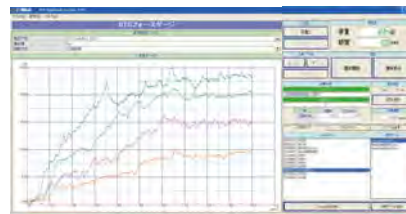
MODEL - ASM-1000



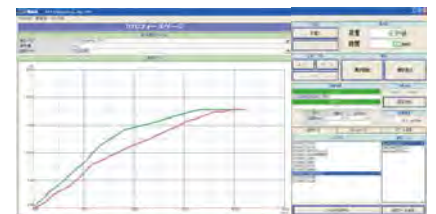
Wave data drawing software is attached !
Cope with various "load - displacement"
examinations !

It is the desk top model automatic test stand for the DTG force gauge. An examination of - load perform it by PC software at displacement - load and time - load, and the graph wave pattern indication at the time of the examination is possible.

Software Application DTG-FX300

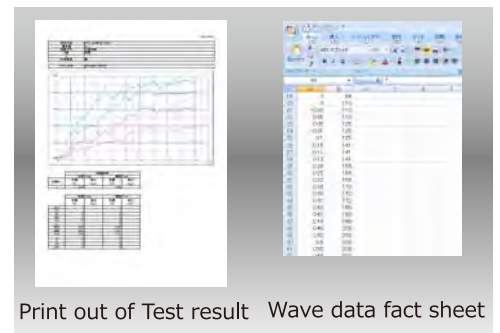


time - load



displacement - load

The test result output



Print out of Test result Wave data fact sheet

- Compression
 - Tensile
 - Connector-insertion
 - Broken
- etc

Specifications

Capacity	1000N (100kgf)
Length Resolution	0.01mm
Test Speed	0.1 ~ 500mm/min (Digital input)
Test Stroke	430mm
Test Function	Blue back light LCD AUTO / MANUAL Any change 0.01mm, 0.10mm, 1.00mm Inching move UP/DOWN/STOP of load value setting UP/DOWN/STOP of displacement value setting Automatically return it to the start position
External Connection	USB Connection (for PC) RS232C(for surmal dot printer) * PC and Printer is option
Transportation	Precise ball screw · servo motor
Safety device	Hard limit stop · Over load stop · Emergency switch
Table Size	W250xD130
Dimensions	W250xH565xD375
Weight	app.22kg
Power source	AC100V ~ 240V Multi

* Specifications are subject to change without prior notice
 * The force gauge and jig does not include

Characteristic (At the time of the connection with the DTG force gauge)

- By setting control value of load and displacement it is possible for control the This ASM-1000 stand.
- The trigger function resets displacement zero to examination quality at the time of contact automatically.
- Can acquire the compression maximum and the pulling maximum including the examination to insert and remove in one examination at the same time.
- Can display a measured real time test value graph wave pattern by the PC software.
- Can easily perform the wave pattern comparison by the examination by a graph wave drawing function repeatedly.
- Can develop graph wave pattern data in CSV on EXCEL.
- Can making Test result with the wave pattern indication and totalizing indication.
- AC100V~240V universal input power supply is used for applying in either domestic or international without confusing.
- This software can select Japanese, English, Korean, traditional Chinese, simple Chinese. There is a language change function and can introduce it into the different production base in relief.